







PM asserts: 'We are the true peace movement'

NUCLEAR DEBATE

The Conservatives were the true peace movement, Mrs Margaret Thatcher... Mrs Thatcher denied that Mr Michael Heseltine, Secretary of State for Defence...



Maxwell-Hyslop: Policies have kept the peace

Leading the peace movement are to have been responsible for carrying out policies which have preserved peace... Mr Robert Adley (Christchurch and Lynton, C)...

Too many involved for visits to graves

WAR WIDOWS

There were just too many people involved to make it a feasible proposition for all war widows to visit their husbands' graves overseas... Lord Glenarthur, a Government spokesman...

State cash for research project

TECHNOLOGY

Work carried out in academic institutions will be funded 100 per cent by government... Mr Patrick Jenkin, Secretary of State for Industry...

departments concerned and the SERC... The directorate will report to a small supervising board of industrialists...

Labour loves spending other people's money

RATING SYSTEM

Labour-controlled local authorities were very big spenders of other people's money, Mrs Thatcher... Mr Alan Belch (Berwick upon Tweed, L)...

War hero's widow being helped

SALE OF VC

The Government had an excellent record on war widows, and the excellence of that record would continue in future... Mr Jack Ashley (Stoke-on-Trent, South, Lab)...

Projections for growth unchanged

THE ECONOMY

There was encouraging confirmation that the economy was recovering, but this had not led the Government to revise its projections for growth... Mr Leon Brittan, Chief Secretary to the Treasury...

British key fitted US missile

DEFENCE

A serious incident involving Thor missiles in 1962 had only recently come to light, Dr David Owen... Mr John Grieve (Inlington, Central, SDP)...

Next week

The main business in the Commons next week will be: Tuesday: Wednesday Progress on the remaining stages of the Police and Criminal Evidence Bill...

Right to buy clause not to be reinserted

HOUSING BILL

The Government does not intend to reinsert the clause in the Housing and Building Control Bill which would have extended right to buy provisions to properties occupied by tenants of charitable housing associations...

Police accept checks on computer records

The Merseyside police have accepted a stringent set of data protection safeguards, to win the support of its Labour-controlled county police committee... Senior officers agreed to seven safeguards at a private meeting...

Motor cycle ace never took test

Roo Haslam, aged 26, the motor cycle racing star, was fined £130 by magistrates in Ilkerton, Derbyshire, yesterday... Mr John Hargreaves, for prosecution, said that Haslam was stopped while riding a Suzuki 250 near his sister's home...

The back-room workers

Mrs Wendy Talley is the tolerant empress of the semi-detached house in Broomfield Road, Chelmsford... Mrs Talley, aged 36, whose husband is a Liberal councillor, is paid as a part-time constituency agent...

Activists prepare for battle

The total number of municipal activists is small, but they perform a vital function... What makes an activist? Mr John Vaughan Jones, an official at the Labour Party's Welsh headquarters in Cardiff...



Court lesson: Ron Haslam, the motor cycle champion after being fined yesterday.



LOCAL ELECTIONS



## THE NEW VOLVO 760 GLE. ITS SHAPE HAS MET WITH SOME RESISTANCE IN THE PRESS BUT VERY LITTLE ON THE ROAD.

In a world where it's often difficult to tell one car from another, no one can mistake the new Volvo 760 GLE.

Its elegant profile is instantly recognisable.

Basically a wedge shape, it has a low bonnet, clearly sculptured edges and a steeply raked rear windscreen.

It is extremely aerodynamic giving a resistant co-efficient of just under 0.40.

(Equally important, it also gives three rear seat passengers the chance to sit up in comfort.)

A few journalists were surprised by the car's unusual profile but no-one has questioned its efficiency.

Although a roomy 5-seater, 6-cylinder saloon, the new Volvo is surprisingly economical.

The automatic model gives you 25 mpg (at 75 mph) 32.1 mpg (at 56 mph) and 17.9 mpg (Urban).

Of course, this economy is not solely due to the car's styling.

The 760 GLE is some 88lbs lighter than Volvo's previous 6-cylinder saloon.

While the car's new automatic transmission is equipped with an overdrive that reduces the engine's fuel consumption at speed, quite dramatically.

### A DRIVER'S CAR.

Economy, however, is rarely the main reason for buying a car of this class.

The Volvo 760 GLE has to meet the needs of the driver as well as the needs of society.

It does it triumphantly.

"Ultimate handling is a delight with

total predictability and neutral balance in fast curves, gentle understeer in the slower ones." *AUTOCAR*

"The car showed excellent stability at all speeds." *MOTOR TREND*

The Volvo 760 GLE is very much a driver's car.

Top speed is 118 mph and 60 mph can be reached in just under 10 seconds, but it's the sheer driveability of the car that marks it out as special.

The long wheelbase and wide track give the car wonderful stability - even when buffeted by side winds, but the biggest contribution to the outstanding handling is made by the new rear suspension.

Volvo have introduced an entirely new constant track rear axle with a patented sub-frame.

This not only improves road holding but gives less vibration and lower noise levels.

Motor Trend summed it up this way:

"The new 760 saloons are capable of getting from Point A to Point B in a better than average hurry. With reassuring stability. Traditional Volvo comfort. And a level of luxury that is new for this company."

Inside, the car is indeed extremely comfortable.

The new front seats have been developed in co-operation with orthopaedic experts at the Sahlgrenska Hospital in Gothenburg.

Both are electrically heated. The seats automatically warm up at temperatures below 14°C.

You can choose leather or plush velour and the upholstery colour is repeated on the door panels and dashboard.

The dashboard itself is angled towards the driver so all the controls are within easy reach.

"Ergonomically the 760 GLE is excellent." *AUTOCAR*

It is also extremely well-equipped.

Full air conditioning, electric windows and door mirrors, central locking, metallic paint, tinted glass, power steering and alloy wheels are all standard.

You'll also find a host of extra little touches that make the 760 GLE a very satisfying car to live with.

For example, when you close the driver's door after getting in the car the courtesy light stays on for 15 seconds giving you time to put the key in the ignition.

There are no less than 10 different storage areas inside the car and there are reading lamps for both front and rear seats.

The boot, too, is especially accommodating.

And if the 760 GLE does well by your suitcases it does even better by your rear seat passengers.

The rear seat is unusually wide due to the absence of any wheel arches and the high roof line gives plenty of headroom.

### THE TRADITIONAL VIRTUES.

Underlying all this enjoyment, of course, is Volvo's traditional concern with safety and reliability.

The new Volvo more than meets

every international safety regulation.

For example, the USA authorities demand that a car must meet stringent frontal collision standards.

The Volvo 760 GLE easily exceeds these standards, being able to absorb an impact some 36% greater than the regulations require.

When a car maker goes to that kind of trouble when it doesn't have to, you know you're in safe hands.

But if longevity of the occupants is a Volvo pre-occupation so is the longevity of the car.

Nobody makes longer lasting cars than Volvo.

The latest statistics to come from the Swedish Motor Inspection Company show that the Volvo has an average life expectancy of 193 years.

Longer than any other car in the survey.

The 760 GLE more than matches the quality of past Volvos, it improves on it.

To help prevent rust approximately one-third of the Volvo's bodywork is Zincrometal or zinc-coated sheet metal. About 18 square metres in all.

### HOW MUCH? WHERE CAN I SEE IT?

The Volvo 760 GLE is at your nearest Volvo showroom now.

Prices start at £12,041, a figure that compares very favourably with other luxury cars on the market.

However, as with the car's looks, we're happy for you to judge the car's value for yourself.

If you'd like a colour brochure, ask your secretary to call us at the number below or send us your business card and we'll do the rest.

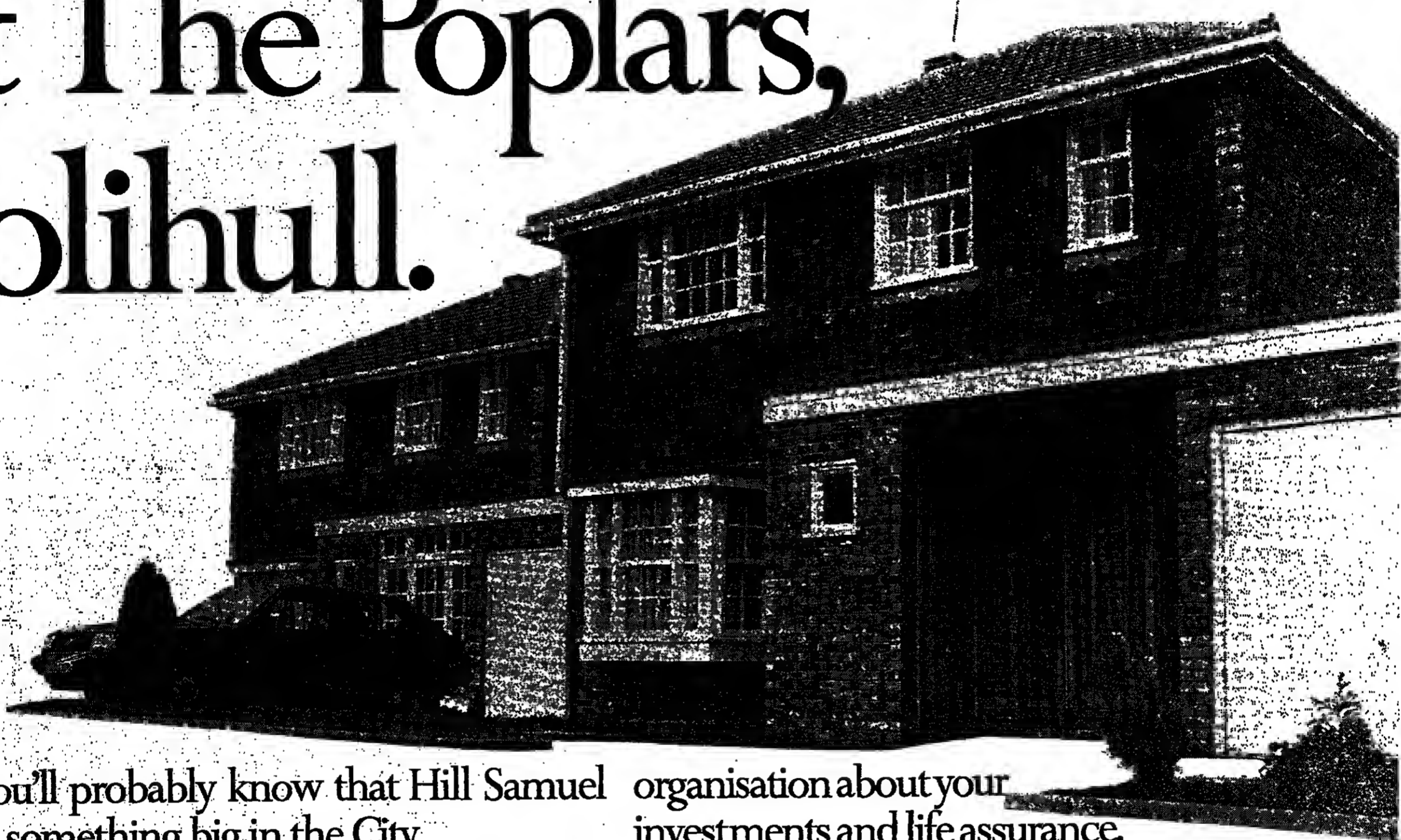
Better still, call in and see the car in the showroom.

You'll find, even standing still, it overcomes any resistance. **VOLVO**



# Hill Samuel.

## Pretty big in the City, absolutely huge at The Poplars, Solihull.



You'll probably know that Hill Samuel means something big in the City.

Fine. But why do we claim to be so important down your own particular street?

Quite simply, we offer a range of services to protect the financial future of you and yours.

You can talk to us about Unit Trusts. Life Assurance. International Investments. Pensions. And a Personal Portfolio Management Service.

We already have investments worth over £4,500,000,000 on our books.

And we employ a team of experts who know how to avoid the problems and pitfalls of the world's investment markets.

Best of all, dealing with Hill Samuel means that you only have to talk to one

organisation about your investments and life assurance.

If you'd like to know more about the way we work, just return the coupon.

Wherever you happen to live, whatever size your personal budget, we've got big plans for you.

I'd like to know more about the different financial services that you can offer. Please send me details.

NAME \_\_\_\_\_

ADDRESS \_\_\_\_\_

POST TO: HILL SAMUEL LIFE AND INVESTMENT SERVICES LIMITED, DEPT. C, 45 BEECH STREET, LONDON EC2P 2LX. TELEPHONE. 01-686 4355.

**HILL SAMUEL**

To put your financial house in order, come to ours.





Muldoon uses royal tour for own ends

Mr Robert Muldoon, the New Zealand Prime Minister, was yesterday again using the royal tour as an exercise in gathering support for his ruling National Party.



Mini-hijack fails: Gene Kartz, of White Plains, New York, is searched on the ground by a policeman at Albany airport after trying to hijack the diminutive commuter aircraft to Portland, Maine.

15,000 fight fires ravaging Japan

Tokyo (Reuters) - nearly 15,000 firemen, troops and police using helicopters yesterday fought forest fires in northern Japan which have destroyed about 60 houses and made 240 people homeless.

Police save Valencia leader from lynch mob

From Harry Debelius Madrid Hundreds of policemen took part in the rescue of the battered and bruised Señor Joan Lerma, the Chief Minister of the Valencia Region's home-rule government, from a lynch-minded mob that surrounded a cinema where the Socialist politician was to have delivered a campaign speech.

Police called in as 29th heart drug baby dies

Toronto police are investigating the death of a baby whose body has been found to contain excessive levels of the powerful heart drug Digoxin.

Clash of ideologies Warsaw's liberals take on hardliners

A party meeting, writes the Soviet satirist Vladimir Voinovich, is an arrangement whereby a large number of people gather together, some to say what they really do not think, some out to say what they really do.

US broadcasts 'slanderous'

Warsaw (NYT, AFP) - The Polish Government told the US yesterday that American radio broadcasts to Poland were aggressive and slanderous.

Swedes launch protest over Baltic crackdown

Sweden yesterday launched a fresh protest against the Soviet Union, this time over a crackdown by the authorities in the Baltic republics of Estonia, Lithuania and Latvia.

Large advertisement for Abbey National Money Service. Two stylized faces are shown, each with a speech bubble. The left face says 'SEVEN DAY ACCOUNT 6.75% Net p.a. = 9.64% Gross'. The right face says 'HIGH OPTION BONDSHARES 7.25% Net p.a. = 10.36% Gross'.

Form for Abbey National Money Service: SEVEN DAY ACCOUNT. Includes text: 'You can come into our Seven Day Account with just £100. With no financial penalties to pay when you withdraw—all we require is 7 days' written notice.'

Form for Abbey National Money Service: HIGH OPTION BONDSHARES. Includes text: 'With High Option Bondshares, we'll pay 1.00% more than our current Share rate, for investments of £500 or more, on 90 days' written notice of withdrawal.'



FRIDAY PAGE

Gillian Moore finds more to be collected than the auctioneer knows

"This is the doing something with my life." The handsome middle-aged woman who had enrolled on Sotheby's Collectors' Week was a newcomer to the nuances of stoneware, ceramics and Japanese ivories.



The romantic objects of art's desire

men, but one was a dealer and the other had vanished by Monday afternoon. The mixed bunch of hairdressers, housewives and lonely hearts being thrilled with desirable objects by Sotheby's are just the top end of a booming leisure industry.

shop varying from 60 per cent to 90 per cent female according to the locality. The official programme of the course or the arts society is rarely what interests people most.

accommodate single people in single rooms. The big hotels that put on cultural events have a different formula for success. Their aim is to make the art so innocuous that you can even bring your husband along if you have one.

MEDICAL BRIEFING

Persuasion at a premium



Persuading parents to have their children immunized against diphtheria, polio and tetanus has become increasingly difficult since the scare over the safety of the whooping cough vaccine.

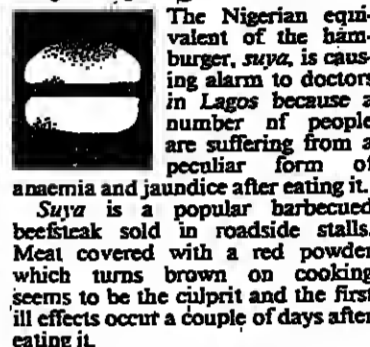
The intention of the Department of Transport's initiative would be to rehabilitate problem drinkers: they would be banned from driving for three years and they would then have to prove they had overcome their drinking problems.

develop kidney problems later in life. Ten years ago few anywhere in Europe would have been treated because doctors doubted that therapy would do any good.

Accusing Africa

As the number of people with AIDS (acquired immunodeficiency syndrome) escalates - over 1200 cases have been reported in the United States and although official UK figures are lacking, 22 cases have been seen in one London hospital alone - the heat is on for epidemiologists to find the cause.

Mystery ingredient



The Nigerian equivalent of the hamburger, suya, is causing alarm to doctors in Lagos because a number of people are suffering from a peculiar form of anaemia and jaundice after eating it. Suya is a popular barbecued beefsteak sold in roadside stalls.

Diabetics at risk

The economic squeeze on the NHS has made the United Kingdom one of the worst places in Europe to be a diabetic with kidney disease.

Olivia Timbs and Lorraine Fraser

Olivia Timbs is editor of Medical Economics and Lorraine Fraser is science editor of General Practitioner.

Shirley Lowe meets Twiggy as she begins the Beguine on Broadway

It's like Fred and Ginger all over again... innit?

Back in 1967, when she was 17, Twiggy made a film called Twiggy in New York to promote a range of clothes bearing her name. "Oh cut this fringe mess!" she told the crowd who admired her Minniecha hair and nearly ethnic headband.



Twiggy with top hat, tails and Tommy Tune

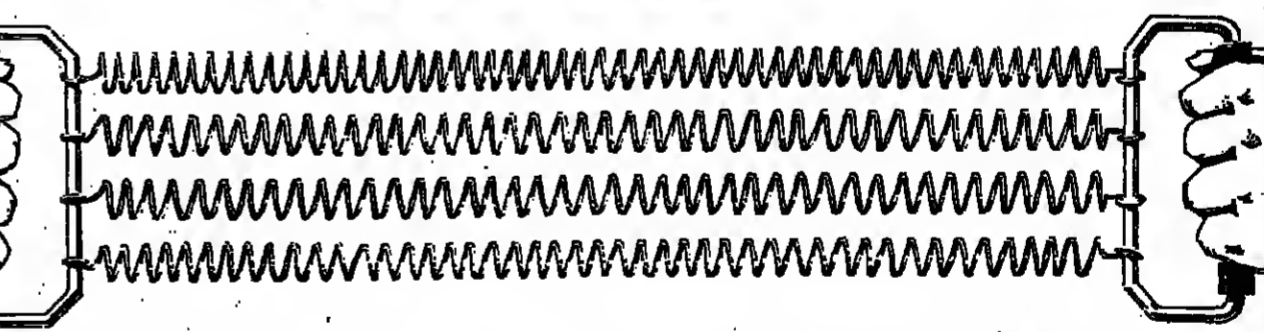
Twiggy has never been much of a talker. "Oh like it 'ere," she announced at one press conference soon after she arrived. Pressed for her reasons, she turned to Justin and said: "What do you like? What she says is often unmemorable but her way of saying it is irresistibly appealing, which is probably why interviewers so often quote her 'innit' and 'norrit' Loo-doo-'naw' vowel sounds.

He said: "Oh great, I'll direct it." So, after MGM, who owned the story, had had a heart attack about Twiggy starring in their film - "They didn't know whether Loo-doo dance and sing or not and whether did I" - she made The Boyfriend and that's where she got to know Tommy Tune, the dancer/balloon choreographer/director/Tony award winner who put the new show together.

house in the country just outside London which she believes is the ideal place to bring up a child. At the moment they are living in a rented apartment in New York. Carly goes to a very good Montessori school nearby and a friend of Twiggy's from Los Angeles is looking after her.

is your child, and it's the last thing you think about when you go to sleep. Sometimes, I wake in the night and think "What will it be like for her? Now I know why my mother worried all the time. I mean, I love Michael very much but he's mad about riding and he keeps talking about getting Carly on to a horse. Carly... on a horse! Her eyes widen with horror.

The expanding airline



Many airlines are contracting because of the recession. But Kuwait Airways is expanding to serve the business traveller better. Apart from daily flights from Heathrow to Kuwait we've laid on daily onward flights to Abu Dhabi and Dubai.

KUWAIT AIRWAYS logo and contact information: Kuwait Airways, 92-95 Piccadilly, London W1. Tel 01-499 7661-4 • Birmingham: 5th Floor, The Rotunda, New Street, B2 4PA. Tel: 021-643 5811









BELLS SCOTCH WHISKY BELLS

The barricades are going up at Debenhams, the high street department stores chain...

Earlier this week, Mr Robert Thornton, chairman, and Mr Kenneth Bishop, finance director, had talks with more than twenty City institutions...

Mr Thornton said that Debenhams had received several inquiries for its Welbeck Finance subsidiary...

Brokers Laurie Millbank is looking for profit of £20m this year against £13.1m last year...

Mr Gerald Ronsay's Keron Group, bought 1 million shares last month. It is estimated to own nearer 5 million shares...

The main talking point in the market with the FT index again crossing the important 700 mark as more than 5 million shares changed hands...

Leading equities experienced a good day's trading with Beecham closing unchanged at 411p, after 415p, Imperial Group 4p up at 116p...

On the new issues front, Mr Paul Hamlyn's Octopus Publishing made a disappointing start...

MARKET REPORT by Michael Clark Debenhams the target

ACCOUNT DAY: Dealings began, April 25. Dealings end, May 6. Contango Day, May 9. Settlement Day, May 16.

Table with columns: High, Low, Company, Price, Change, Yield, Dividend, P/E

Table with columns: High, Low, Company, Price, Change, Yield, Dividend, P/E

Table with columns: High, Low, Company, Price, Change, Yield, Dividend, P/E

Table with columns: High, Low, Company, Price, Change, Yield, Dividend, P/E

Table with columns: High, Low, Company, Price, Change, Yield, Dividend, P/E

Table with columns: High, Low, Company, Price, Change, Yield, Dividend, P/E

Table with columns: High, Low, Company, Price, Change, Yield, Dividend, P/E

Table with columns: High, Low, Company, Price, Change, Yield, Dividend, P/E

Table with columns: High, Low, Company, Price, Change, Yield, Dividend, P/E

Table with columns: High, Low, Company, Price, Change, Yield, Dividend, P/E

Table with columns: High, Low, Company, Price, Change, Yield, Dividend, P/E

Table with columns: High, Low, Company, Price, Change, Yield, Dividend, P/E

Table with columns: High, Low, Company, Price, Change, Yield, Dividend, P/E

Table with columns: High, Low, Company, Price, Change, Yield, Dividend, P/E

Table with columns: High, Low, Company, Price, Change, Yield, Dividend, P/E

Table with columns: High, Low, Company, Price, Change, Yield, Dividend, P/E

Table with columns: High, Low, Company, Price, Change, Yield, Dividend, P/E

Table with columns: High, Low, Company, Price, Change, Yield, Dividend, P/E

Table with columns: High, Low, Company, Price, Change, Yield, Dividend, P/E

Table with columns: High, Low, Company, Price, Change, Yield, Dividend, P/E

Table with columns: High, Low, Company, Price, Change, Yield, Dividend, P/E

Table with columns: High, Low, Company, Price, Change, Yield, Dividend, P/E

Table with columns: High, Low, Company, Price, Change, Yield, Dividend, P/E

Table with columns: High, Low, Company, Price, Change, Yield, Dividend, P/E

Table with columns: High, Low, Company, Price, Change, Yield, Dividend, P/E

Table with columns: High, Low, Company, Price, Change, Yield, Dividend, P/E

Table with columns: High, Low, Company, Price, Change, Yield, Dividend, P/E

Table with columns: High, Low, Company, Price, Change, Yield, Dividend, P/E

Table with columns: High, Low, Company, Price, Change, Yield, Dividend, P/E

Table with columns: High, Low, Company, Price, Change, Yield, Dividend, P/E

Table with columns: High, Low, Company, Price, Change, Yield, Dividend, P/E

Table with columns: High, Low, Company, Price, Change, Yield, Dividend, P/E

Table with columns: High, Low, Company, Price, Change, Yield, Dividend, P/E

Table with columns: High, Low, Company, Price, Change, Yield, Dividend, P/E

Table with columns: High, Low, Company, Price, Change, Yield, Dividend, P/E

Table with columns: High, Low, Company, Price, Change, Yield, Dividend, P/E

Table with columns: High, Low, Company, Price, Change, Yield, Dividend, P/E

Table with columns: High, Low, Company, Price, Change, Yield, Dividend, P/E

Table with columns: High, Low, Company, Price, Change, Yield, Dividend, P/E

Table with columns: High, Low, Company, Price, Change, Yield, Dividend, P/E

Table with columns: High, Low, Company, Price, Change, Yield, Dividend, P/E

Table with columns: High, Low, Company, Price, Change, Yield, Dividend, P/E

Table with columns: High, Low, Company, Price, Change, Yield, Dividend, P/E

Table with columns: High, Low, Company, Price, Change, Yield, Dividend, P/E

Table with columns: High, Low, Company, Price, Change, Yield, Dividend, P/E

Table with columns: High, Low, Company, Price, Change, Yield, Dividend, P/E

Table with columns: High, Low, Company, Price, Change, Yield, Dividend, P/E

Table with columns: High, Low, Company, Price, Change, Yield, Dividend, P/E

THE TIMES 1000 1982/1983 The World's Top Companies

Handwritten signature and logo at the bottom of the page.



Investment and Finance City Editor: Anthony Hilton

THE TIMES City Office: 200 Gray's Inn Road London WC1X 8EZ

STOCK EXCHANGES FT Index: 698.8 down 2.2 FT Gilt: 81.60 unchanged

CURRENCIES LONDON CLOSE Sterling \$1.5595 down 65pts Index 84.2 unchanged

INTEREST RATES Domestic rates: Base rates 10 3 month interbank 10 1/4-10 1/8

PRICE CHANGES Davies & Newman 181p up 31p Bodycote 59p up 6p

TODAY Interfirms: None announced Finals: Clayton, Son and Co

Wall Street mixed in moderate trading

New York (AP-Dow Jones) - Stocks were pulling back and turned mixed in moderate trading.

Bank issues indexed long tap

The Bank of England took the gilt market by surprise with its issue of a new long tap yesterday.

Hoover trading profits improve

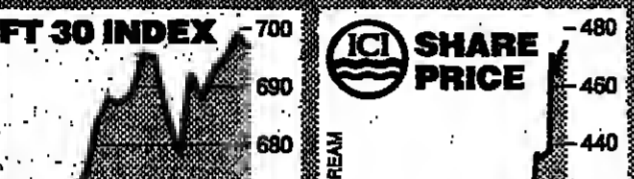
Hoover, the domestic appliance group, continued to improve its trading performance in the first quarter of the year.

Pension funds opposed to Harrods demerger, claims Fraser chairman

An independent report commissioned by the National Association of Pension Funds on the battle between Lomro and the main House of Fraser board over whether Harrods should be demerged.



Holding on to Harrods: Professor Smith cites "demerger risks" in pension funds report



ICI profits surge surprises market

ICI surprised the stock market at midday by announcing a £128m pretax profit figure for the first quarter of 1983.

36,000 in steel protest

American steelworkers launched a two-pronged drive yesterday to block a proposed joint venture by British Steel and US Steel Corporation.

Linford may bid for Key Markets

Linford Holdings, which is in the middle of a bitterly fought takeover battle for Fitch Lovell, is considering a number of alternatives.

New minister needed for EEC reforms, says Goldsmith

Call for European free trade

The Prime Minister should appoint a Cabinet minister without portfolio to spearhead a "coordinated reforming crusade within the EEC".

Heavy fund investment abroad

Pension fund managers are continuing to invest overseas with 27 per cent of total cashflow pumped into foreign markets during 1982.

Call to wind up six Hunt companies

Up to 2,000 private investigators may be caught up in the problems of Exchange Securities and Commodities, the Warwick-based investment management group founded by Mr Keith Hunt.

Improved overall profit in difficult markets

The results reflect the intensified competition experienced by the insurance industry in the territories in which the Group operates.

United Kingdom

The magnitude of the underwriting losses experienced by the market should result in premium rates hardening and also discourage underwriters from following the policy of writing risks solely to obtain premium volume.

Other Territories

The improvement in our German result has materialised. In Canada, whilst higher premium rates were forced through, this has continued to result in business being lost to competitors.

Life

New business growth plans were again achieved overall and new annual premiums increased by 15% with new single premiums recording a 138% rise.

Prospects

We shall actively continue our policy of working primarily towards improvement in profitability rather than increase in volume in all territories and classes of business.

Aid for our economic acorns

Ministers have been making great play since the Budget of the measures being introduced to help the small companies sector.

Advertisement for Guardian Royal Exchange Assurance, featuring a building image and text about insurance services worldwide.

INVESTORS' NOTEBOOK edited by Sally White

ICI profits take the City by storm

ICI took the market by storm with its £128m profit figure against the most bullish estimates of around £110m for the first quarter of 1983.

Much will depend on how enthusiastically the US interest in the shares is maintained.

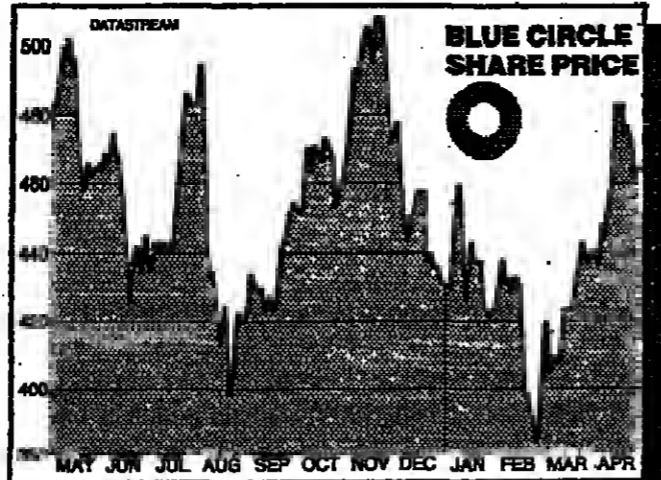
Blue Circle

Blue Circle Year to 31-12-82 Pretax profit £90m (£104.1m) Stated earnings 52.5p (48.1p) Turnover £765.2m (£750.2m) Net final dividend 12.25p making 18.25p (17.5p) Share price 463 up 2p. Yield 5.6%

A surge in UK profits has saved Blue Circle from the more painful effects of the dramas that have been effecting its leading businesses in Latin America.

Group pretax profits last year dropped from £104.1m to £90m. That is not bad performance in the light of the £37m downturn that occurred in Mexican and Chilean trading profits under pressure from economic collapse and plunging currencies.

Enormous price increases in Mexico and significant progress



recovery in Latin American profits, for so long Blue Circle's growth provider, is going to have to wait 1984.

further good progress in 1983. It has been well over a year since the last price rise.

With the industry's common price agreement once more under pressure, both commercially and from the office of Fair Trading it is going to prove difficult to push another through this year.

John Laing

John Laing Year to 31-12-82 Pretax profit £1.3m (£6.1m) Stated loss per share 4.5p (14.7p) Turnover £773m (718m) Final dividend 1.875p making 2.875p (same) Share price 110p up 15p Yield 3.7%

John Laing, Britain's second largest construction group, caught a cold in its three main

overseas markets last year. Problems ranged from the cancellation of a £40m dam building contract and unreliable management in Venezuela, to a write down of £4.8m on two large contracts in the Middle East.

The result was that exceptional losses of £13.3m and extraordinary losses of £5.8m were included in the 1982 results. Without the problems overseas, the company said, pretax profits of £1.3m against £6.1m last year would have been much higher.

In 1983 the group hopes that profits will be in the region of £23m if all goes well.

George Wimpey, the house-building group, managed a 23m increase in pretax profits to £45.7m in 1982 compared with the previous year on a turnover which increased from £1.1bn to £1.24bn. A final dividend of 2.15p is recommended, making 3p for the year against 2.8p last time.

£24m Dowable bid for Cope lapses

By Andrew Cornelius

The bid for Cope Allman, the leisure and packaging group, by the Dowable consortium, lapsed yesterday.

Robert Fleming & Company, the merchant bankers to Dowable, said that after receiving acceptance representing only 22.7 per cent of Cope Allman's share capital, Dowable was unable to declare the offer unconditional. Therefore, the offer has lapsed.

Mr David Wickins, the chairman of British Car Auctions, and who heads the consortium, launched his £24m offer for Cope Allman last month after joining

forces with Mr Michael Ashcroft, head of the Hawley Group, the leisure and entertainments company, and Lin Pac, the packaging and container company.

The Dowable consortium held a 14 per cent stake in Cope Allman when the bid was announced. It had launched a similar consortium-based takeover attempt last December.

The present takeover battle was bitterly contested by Cope which described the Dowable offer as unsolicited and unwelcome.

Dottridge buy-out

By Derek Harris, Commercial Editor

Dottridge Brothers of North London, one of the oldest names in the funeral trade which has been a family-run private company since 1835, is being bought out by its senior management.

Dottridge, which has about 30 trading branches in the South East and employs about 200 people, is among the top 20 funeral companies in Britain. There are about 600,000 funerals a year in Britain and costs for a funeral vary from £300 to £400.

The management team which is buying Dottridge for £1.5m is Group Captain Anthony Dottridge, the 66-year-old chairman who was a Second World War fighter pilot, Mr Victor Taylor, the 40-year-old managing director and Mr Simon Strudwick, finance director.

The three are taking three quarters of the equity with the rest covered by a term loan from County Bank which is continuing as the company's financial adviser. Dottridge has an annual turnover of £3.4m.

Granville & Co Limited

(Formerly M. J. H. Nightingale & Co. Limited) 27/28 Lovat Lane, London EC3R 8EB Telephone 01-621 1212 The Over-the-Counter Market

Table with 6 columns: Symbol, Last, Change, Bid, Offer, % Change. Includes entries for various companies like Ash Ind, As Ind, etc.

WATMOUGHS (HOLDINGS) PLC

Gravure and litho printers Carton manufacturers Another year of progress 1 for 5 scrip issue

Table showing financial data for 1982 and 1981: Group turnover, Group profit, Dividend per share, etc.

Outlook New opportunities available to gravure capacities because of technical innovations. Additional major contracts obtained for 1983. Better prospects for packaging interests.

Report and accounts available from the Secretary, Idle, Bradford, West Yorkshire BD10 8NL

COMMODITIES section containing various market data including LONDON METAL EXCHANGE, GREAT BRITAIN LIVESTOCK, RUBBER, COFFEE, etc.

Table with 2 columns: Symbol, Price. Includes entries for WOOD, SOYABEAN MEAL, etc.

COMPANY NEW IN BRIEF section with short summaries of financial results for various companies like Farnell Electronics, Pochin's, etc.

Norwich Union advertisement featuring the headline 'The Chairman Mr M G Falcon CBE, DL reports:' and sub-headers for Life Society, Fire Society, and NW Group.

Large table for Norwich Union financial results, including sections for Life Society (1982 vs 1981), Fire Society, and NW Group (1982 vs 1981).

Norwich Union Insurance advertisement featuring a logo with a tower and the text 'NORWICH UNION INSURANCE' and 'The Annual General Meeting of the Norwich Union Life Insurance Society will be held on the 10th May 1983 in Norwich'.

Table with 2 columns: Symbol, Price. Includes entries for S. Simpson, etc.

Base Lending Rates section listing rates for various banks like A&N Bank, Barclays, etc.

WEAR advertisement with 'PROGRESS Results for 52 weeks ended 31st December 1982' table and a descriptive paragraph about the group's financial position and outlook.

WEAR THE WEAR GROUP PLC advertisement featuring a logo and contact information for reports and accounts.



# Injury to Withe disrupts Robson's plans

By Stuart Jones, Football Correspondent

Bobby Robson yesterday lost the England centre forward he found on Wednesday night. Withe broke his thumb during the first half of the European Championship tie against Hungary at Wembley and suffered a depressed fracture of his cheekbone during the second and is out for the rest of the league season.

Robson admitted that he had added Withe to the party merely as "a stop gap" after Woodcock had joined his club. Woodcock was the last of the big injury list. But events during the crucial 2-0 victory persuaded him to review the international prospects of Aston Villa's 31-year-old forward.

## How they stand at halfway stage

Table showing football league standings for Group three, Group four, Group seven, and Group two.

The midfield race remains unsettled. Lee and Mabbutt

# Eggs and euphoria for the Welshmen

By Peter Ball

The right result covers a lot of cracks, and it was understandable that Mike England was in tears of joy and euphoria over breakfast in his Llangollen hotel yesterday morning.

## Irish like big time

By David Powell

Northern Ireland are planning to fire their next European Championship shot not in the group six match with Austria in September but with England in the British Championship on May 28.

# Gunfire stops play on court

By Rex Bellamy, Tennis Correspondent

Richard Lewis beat Robin Drysdale 6-3, 4-6, 7-5 to reach the last eight of the men's singles in the British Home Stores tournament at Hampstead yesterday.

# Snooker

Thornburn: snooker is the one for a game of patience



Thornburn: snooker is the one for a game of patience

# Davis pins down the mercurial Irishman

By Sydney Friskin

Steve Davis, the 1981 champion, was all grace and ease against the defending champion, Alex Higgins, when their semi-final of the world championship, sponsored by Embassy, began at the Crucible Theatre, Sheffield, yesterday.

# 'Whale' makes bow wave at Lord's

By John Woodcock, Cricket Correspondent

The weather at Lord's yesterday was perfect for cricket. It was warm for the time of year, the sun shone almost without interruption.

# Lever has Cambridge in trouble

Cambridge University First innings

John Lever, the former England fast bowler, took seven wickets for 63 for Essex against Cambridge University at Fenner's yesterday.

# Five Blues available to Toogood

By Richard Streeton

Oxford University and Somerset provided the weather retdies, hope to play a 50-over match in the Parks today.

# Denton pays call - and faces Lendl

By a Special Correspondent, Dallas

Breaking his journey to Houston and calling in at the World Championship Tennis finals proved a lucky decision for Steve Denton, a husky Texan.

# Renewing the struggle

From the stream of political undercurrents has emerged the well-known saying: "If you can't beat 'em, join 'em."

# Guide to the season's competitions

World Cup: Holders: West Indies. Contested by the seven full members of the International Cricket Conference.

NatWest Bank Trophy: Holders: Surrey. Contested by the 17 first-class counties, last season's leading 13 minor counties, Ireland and Scotland.

John Player: Holders: Sussex. Contested by the 17 first-class counties, who play each other once.

Amarnath leads Indian recovery: St. John's, Antigua - India, put in to bat in the 10th over.

County championship: Holders: Middlesex. Contested by the 17 first-class counties, who play eight of the other two and the remaining eight.

John Player: Holders: Sussex. Contested by the 17 first-class counties, who play each other once.

Amarnath leads Indian recovery: St. John's, Antigua - India, put in to bat in the 10th over.

Amarnath leads Indian recovery: St. John's, Antigua - India, put in to bat in the 10th over.

# Rugby League Cup mercy for Kemble

Gary Kemble, the Hull and New Zealand full back, breathed a sigh of relief after yesterday's disciplinary committee meeting in Leeds.

Test series: England will meet New Zealand in a series of four matches after the World Cup.

John Player: Holders: Sussex. Contested by the 17 first-class counties, who play each other once.

Amarnath leads Indian recovery: St. John's, Antigua - India, put in to bat in the 10th over.

Amarnath leads Indian recovery: St. John's, Antigua - India, put in to bat in the 10th over.

Test series: England will meet New Zealand in a series of four matches after the World Cup.

John Player: Holders: Sussex. Contested by the 17 first-class counties, who play each other once.

Amarnath leads Indian recovery: St. John's, Antigua - India, put in to bat in the 10th over.

Amarnath leads Indian recovery: St. John's, Antigua - India, put in to bat in the 10th over.

Amarnath leads Indian recovery: St. John's, Antigua - India, put in to bat in the 10th over.

Amarnath leads Indian recovery: St. John's, Antigua - India, put in to bat in the 10th over.

Amarnath leads Indian recovery: St. John's, Antigua - India, put in to bat in the 10th over.

Amarnath leads Indian recovery: St. John's, Antigua - India, put in to bat in the 10th over.

Amarnath leads Indian recovery: St. John's, Antigua - India, put in to bat in the 10th over.

Test series: England will meet New Zealand in a series of four matches after the World Cup.

John Player: Holders: Sussex. Contested by the 17 first-class counties, who play each other once.

Amarnath leads Indian recovery: St. John's, Antigua - India, put in to bat in the 10th over.

Amarnath leads Indian recovery: St. John's, Antigua - India, put in to bat in the 10th over.

Amarnath leads Indian recovery: St. John's, Antigua - India, put in to bat in the 10th over.

Amarnath leads Indian recovery: St. John's, Antigua - India, put in to bat in the 10th over.



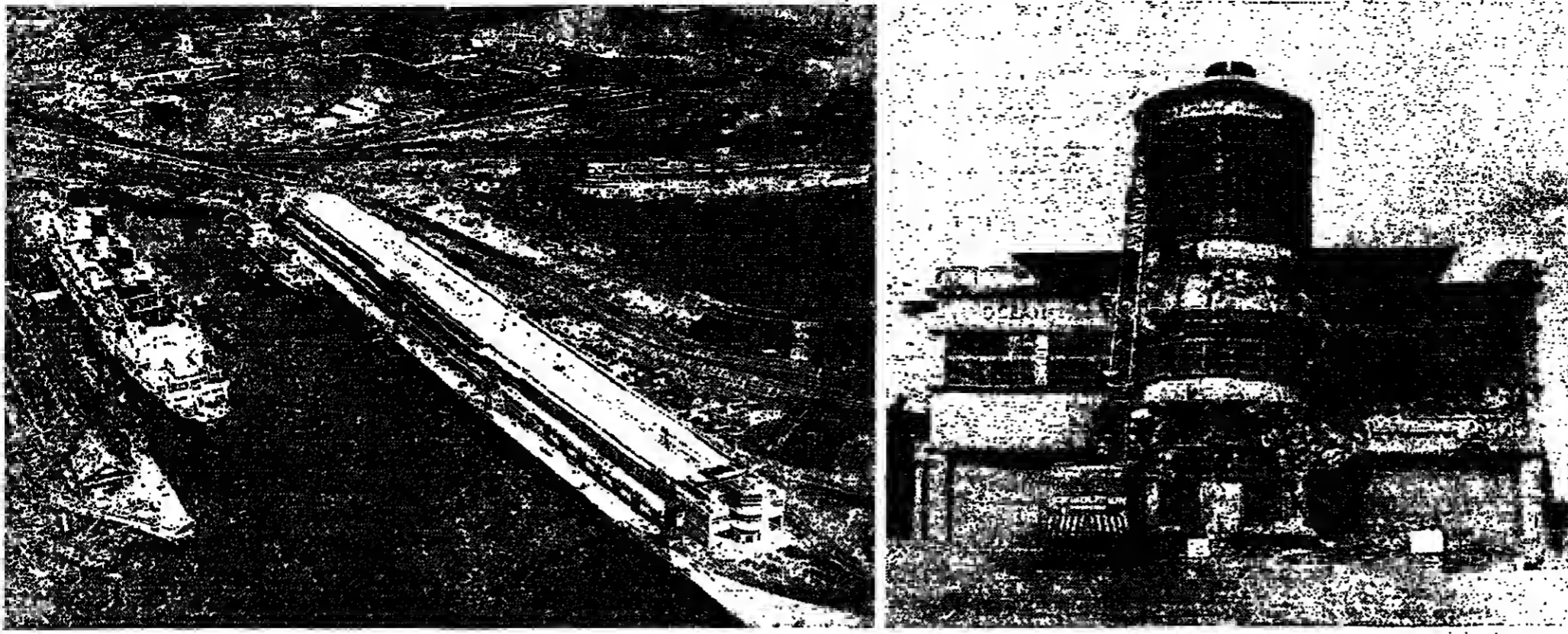












Last day of a glorious landmark

Age has caught up with the once magnificent dockside terminal at Southampton, seen above left in its heyday with the Queen Mary in dock and right, yesterday receiving the attentions of a demolition company.

Jenkin offers £200m aid for computer industry

The Government is to spend up to £200m over the next five years to help the British electronics industry develop a new generation of more advanced computers.

Syrian pressure 'delaying talks'

Continued from page 1 agreement between Israel and Lebanon. The arrival of the American Secretary of State has been marked by an increase in tension between Israeli and Syrian troops in Lebanon's eastern Bekaa Valley and a vicious anti-American campaign by the Syrian state-controlled press.

Frank Johnson in the Commons. Salvador and Surrey by Foot's Tours

Both Central America and Surrey County Council's rate increases were among the subjects which Mr Michael Foot, ever the man for the broad sweep, raised yesterday when a renewed trough of "pre-election atmosphere" enveloped the House.

THE TIMES INFORMATION SERVICE

Today's events

Royal engagements Prince Michael of Kent visits JCB at Rochester, Ultoneter, as President of the Institute of the Motor Industry.

Hospital, Chichester, 1.45; opens the new swimming centre of Arun District Council at Littlehampton.

2.45; attends two receptions in Worthing to celebrate the Golden Jubilee of Worthing Area Guild for Voluntary Service, arrives Methodist House, Gordon Road, 3.45 and then arrives Ashmount, Shelley Road, 4.15.

1. closed Sun (from today until May 28)

Last chance to see Out of This World, arts of science fiction, Art Gallery and Museum, School Hill, Aberdeen: Mon to Sat 10 to 5, Thurs 10 to 8, Sun 2 to 5 (ends tomorrow).

Food prices

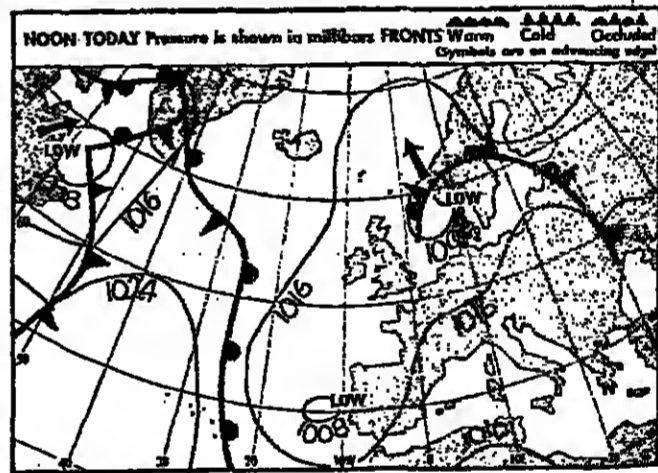
For those spending the holiday weekend at home, an important consideration should be how to reduce the burden on the family cook: part of the answer could lie in cold lunches, particularly as salad vegetables are becoming cheaper and more plentiful.

Roads

London and South-east: A13: Roadworks at Barking, Dagenham and Limehouse. A11: Congestion between Stratford and Bow.

Weather

A depression will remain slow-moving in the North Sea, and a slack area of low pressure will persist over the British Isles.



High tides

Table listing high tide times for various locations including London Bridge, Aberdeen, and Plymouth. Columns include location, AM, PM, and tide height.

Around Britain

Table showing weather conditions (Sun, Rain, Wind) for various regions across Britain, including St Andrews, Scarborough, and London.

Abroad

Table showing weather conditions for various international locations such as Algiers, Athens, and Moscow.

The Times Crossword Puzzle No 16,116

A crossword puzzle grid with numbers indicating the starting positions for words. The grid is partially filled with letters.

- ACROSS 1 Fish with worm's tail for a spell (5). 2 Perhaps some fire in an inferior novel? (3-6). 3 Like this rogue reformed (9). 4 Vestment taken by an old-time saint (5).

Music

Concert by Royal Philharmonic Orchestra, Royal Concert Hall, Nottingham, 7.30.

Talks, lectures

Plants and People in the Yorkshire Dales, by Dr John Rodwell, Duke's Playhouse, Lancaster University, 12.35.

General

Carl Car Amberley Horse Show and Country Fair, Civechester Park, Gos (until May 2).

Anniversaries

Births: John Lubbock, 1st Baron Avebury, banker, politician and archaeologist, London, 1834; Sir Thomas Beecham, St. Martin's Lane, 1879; Sir Malcolm Sargent, Ashford, Kent, 1895; Duke of Ellington, Washington, 1897; James Montgomery, poet and hymn writer died at Sheffield, 1854.

Top films

- Top box-office films in London: 1 (1) Sophie's Choice 2 (2) Gandhi 3 (-) The Wicked Lady 4 (6) 10 to Midnight 5 (9) Local Hero 6 (7) Heat and Dust 7 (4) An Officer and a Gentleman 8 (-) Tales of Ordinary Madness 9 (8) The Verdict 10 (5) Best Friends

Top video rentals

- 1 Annie (RCA/Columbia) 2 The Evil Dead (Palco) 3 Arthur (Warner) 4 Annylene II - The Possession 5 Kramer vs Kramer (RCA/Columbia) 6 Fort Apache - The Bronx (VTC) 7 Conan The Barbarian (Thorn EM) 8 Annapolis (CPC) 9 Death Wish II (RCA/Columbia) 10 Stripper (RCA/Columbia)

Parliament today

Commons (9.30): Private members' Bills: Copyright (Amendment) Bill, report. Coroners' Juris Bill, committee.

The papers

The Daily Mirror criticizes Mrs Shirley Goodwin and her husband for announcing that she will not speak publicly without receiving a five-figure sum.

The pound

Table showing exchange rates for various currencies including Australia, Austria, Belgium, Canada, Denmark, France, Germany, Hong Kong, Ireland, Italy, Japan, Netherlands, Norway, Portugal, South Africa, Spain, Sweden, Switzerland, USA, and Yugoslavia.

Lighting-up time

London 8.50 pm to 8.56 am. Estimated 8.50 pm to 8.56 am. Edinburgh 8.04 pm to 8.08 am. Penzance 8.07 pm to 8.51 am.

Yesterday

Temperatures at midday yesterday: c, cloud; f, rain; s, sun.

Highest and lowest

Yesterday's highest day temp. London, 16C (61F); lowest day temp. St. George's Channel, 12C (54F).